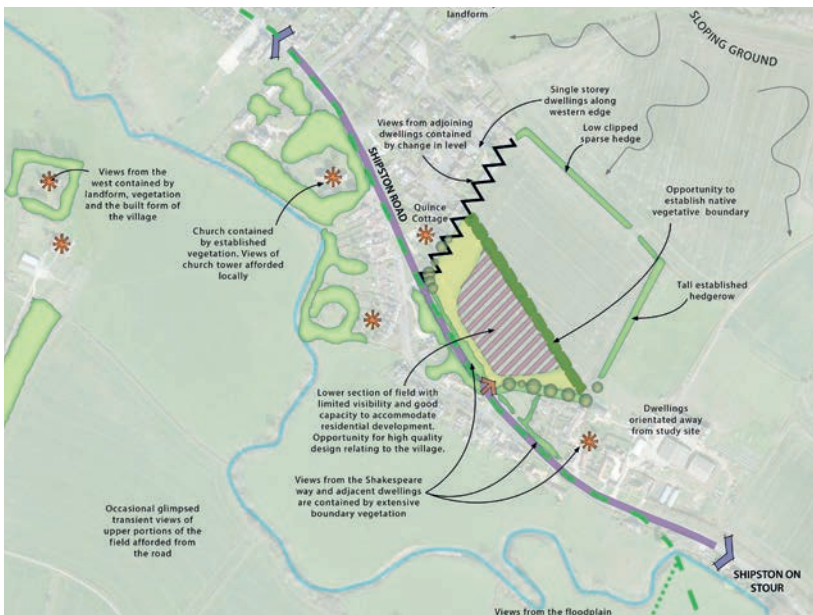




A 5.6 acre former arable field adjoining a Warwickshire Village.

Rosconn promoted this site adjoining the Warwickshire village of Alderminster, on behalf of the landowners who with longstanding ties to the village wanted to leave a positive legacy.

The site had many issues that required detailed analysis. The two key points here were the impacts on landscape sensitivity and the setting of nearby heritage assets.



Number of Homes:

 **25**



Site Size:

5.6
Acres

Local Authority:



Stratford on Avon District Council



Purchaser:

Barwood Homes



Difference between highest and lowest bid:

36.2%

Promotion Agreement Exchanged:



May 2014

Planning Application Submitted:



August 2014

Planning Permission Granted:



August 2015

Sale Contracts Exchanged:



November 2015

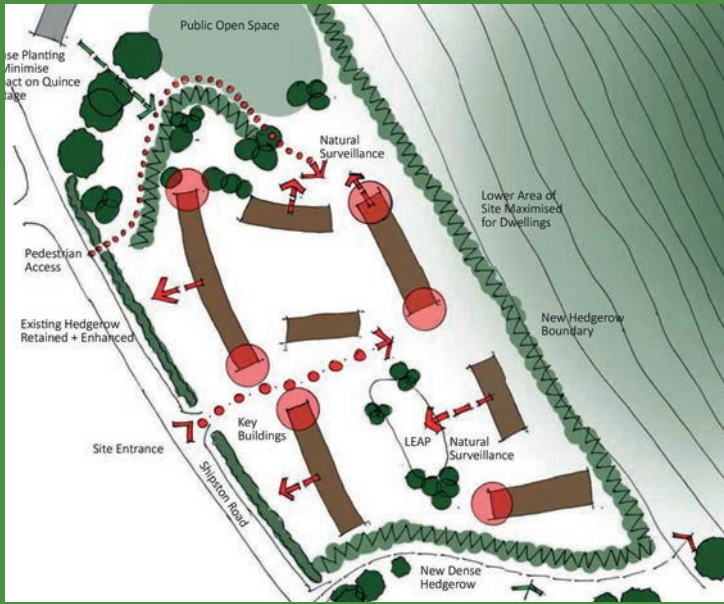


We are passionate about achieving **the maximum return** on your land

For more success stories visit rosconngroup.com

Alderminster

Stratford-on-Avon District Council



Following extensive public consultation and input from our expert consultants, we arrived at a scheme that we felt addressed the key constraints.

Key view points to nearby listed buildings including the Grade II* Church were preserved, a new extensive area of public open space was created including a much sought after village play space and the scheme included badly needed affordable housing.

The planning application was put 'under the microscope', as four different planning officers were assigned to the case due to resource issues at the local authority. Despite this Rosconn secured an officer recommendation to grant, which was followed by the planning committee. After this positive determination we were delighted to share the news with the landowners and get busy preparing a marketing strategy to maximise the sale price of the land. After the marketing period the site was then sold to Barwood Homes.



We have **great feedback** from our clients

For more success stories visit [rosconn.com](https://www.rosconn.com)